



Weather FORECAST Sat Cloudy
 70° F | 55° F
 Fri T-Storms 50%
 78° F | 60° F
 Sun Rain 90%
 61° F | 56° F

Visit us on the forum:
Volume 11, Issue 22

Labor Day Weekend Was a Blast!!

Hands down, Rausch Creek is a fun way to have memorable Labor Day Weekend. One of our busiest weekends proved no different this year as there were many smiling and relaxed faces passing through the office and riding on the trails. 33 riders joined our first every MUD RIDE as we showed them to four different muddy water areas and enjoyed lunch served by RC. I think this will become a tradition!

Enjoy the picture:



A NEW LEVEL OF MUDDY



Mud Slinger



Bugs Wanna Have Fun



Family Time

ALL GUESTS:

RIDING OR NON-RIDING MUST BE SIGNED IN UPON ARRIVAL! THE GUEST WAIVER IS ON THE OUTSIDE OFFICE WALL 24/7.

Inside this issue

Great Weekend 1
 2
 Local to Dos 3
 2018 Riding Restrictions 4

Need the Lockbox Combination for the gates?

Join the RCTR forum @ rauschcreekracing.com to see the latest code



Winter/Fall Office Hours Change

Still open 7-days a week!
 The NEW HOURS will be:
 Mon-Thurs. 9am-4pm
 Friday-Sunday 8am-5pm

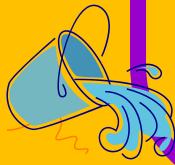
TIP OF THE DAY

Conserve Water?

If you accidentally drop ice cubes, don't throw it in the sink. Drop them in a house plant instead.

=====

Washing dark clothes in cold water saves water and energy, plus retains the color in your clothes.



LOCAL TO DO'S

Every Friday afternoon and evening, Cross-roads Farmer's Market, Route 25 between Gratz and Berrysburg

Sky-Vu Drive-In The Nun & Slender Man

****The Gratz Fair: agricultural & horticultural exhibits, queen contest, harness racing, carnival, entertainment—September 16-27**

****Craft Fair @ Hegins Park—September 16**

Oct 14 Tamaqua Heritage Day 10am-5pm

Oct 17 Ashland Apple Festival 11am-4pm

Oct 20 Autumn Stroll Craft Show in Pine Grove 10am-4pm

2018 Event Schedule

September 1st Mud Run RIDE

October 20th Halloween Bash

October 21st Dual Sport Ride

October 27th Fall Foliage Ride

November 17th Turkey Feast



Riding Restrictions due to Hunting

It's that time of year again! Please review the following riding restrictions for the upcoming hunting season. These dates are also posted at the office, garage and near every gate leading into the campground.

October 4, 2018 - January 25, 2019

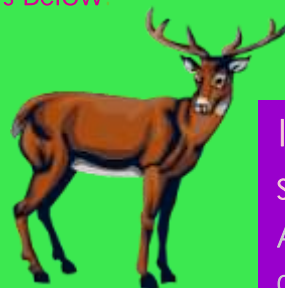
NO RIDING BEFORE 9:00AM, Excluding Sundays & *Specific Days Below

CLOSED to ALL RIDING UNTIL NOON

- *Saturday, September 29th, 2018 ~Deer-Archery
- *Saturday, October 13, 2018 ~Black Bear/Deer-Muzzleloader
- *Friday, December 28, 2018 ~Deer-Archery/Flintlock

CLOSED to ALL RIDING ALL DAY

- *Thursday, October 18, 2018 ~Deer-Junior/Senior
- *Monday, November 19, 2018 ~Black Bear
- *Saturday, December 1, 2018 ~Deer-Buck
- *Saturday, December 8, 2018 ~Deer-Buck



Is your Helmet strapped?

Are you roaming the campground roads or even the trails without your helmet strapped? Be safe & please always make sure yours is!