

Weather Forecast

Fri Cloudy
44° F | 30° F

Sat Sunny
43° F | 27° F
Sun Cloudy
46° F | 28° F



RAUSCH CREEK TRAILRIDERS

FEBRUARY 2, 2024
VOLUME 17, ISSUE 5



Hunting
Restrictions have been lifted ...all members may start riding at DAWN!

INSIDE THIS ISSUE

Early Spring?	1
"Grace Period"	2
Sweetheart Day	3

ALL GUESTS

*Riding or not everyone must be signed in upon arrival! The guest waiver is hanging on the wall of the office building 24/7. * This does not exclude members. Members must sign in every visit.

NEED THE LOCKBOX

COMBO FOR THE

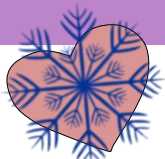
GATES? Call the office, 570-682-1075, with your camp address.

The Andrew Gate is permanently CLOSED

Only Honda, Polaris West, & parts of Valley View

Is your Helmet strapped?

Are you roaming the campground roads or even the trails without your helmet strapped? Be safe & please always make sure yours is!
THANK YOU.



Will Spring Come Early?

Happy Groundhog's Day! On this February 2nd, Punxsutawney Phil, the seer of seers, the prognosticator of all prognosticators, was awakened from his wintry nap at dawn on Gobbler's Knob. Phil looked to the skies ...it's not what I feel, it's what I see and what you hear. So gather 'round and let me be clear.... hope for the future and so much more. Maybe some 'Punxsutawney Phil' write-in votes in 2024. But one thing the weather did NOT provide – is a SHADOW and a reason to hide. Glad tidings on this Groundhog Day! YES, an early Spring is on the way!

While groundhogs are famous for predicting the weather, they aren't the only ones that can tip you off about the climate outside. These are some popular weather lore sayings involving other animals:

- When a cow endeavors to scratch its ear, it means a shower is very near.
- If the robin sings in the bush, then the weather will be coarse; If the robin sings on the barn, then the weather will be warm.
- Wild geese, wild geese, going out to sea, all fine weather it will be. Wild geese, wild geese, going to the hill, The weather it will spill.
- Wolves always howl more before a storm.
- Deer and elk come down from the mountains at least two days before a storm.
- If the rooster crows on going to bed, you may rise with a watery head.
- When deer are in gray coat in October, expect a severe winter.
- When the donkey blows his horn, 'Tis time to house your hay and corn.
- When a squirrel eats nuts in a tree, weather is as warm as warm can be.
- When the cat lies in the Sun in February, she will creep behind the stove in March.
- When the swallow's nest is high, the summer is very dry; When the swallow buildeth low, you can safely reap and sow

So before you put away those winter boots or your rain gear, observe how your pets or wild animals are behaving.

CAMPSITE "GRACE PERIOD"

RAPIDLY EXPIRING

- ▲ On FEBRUARY 29th campsites that haven't been renewed will become available to current members.
- ▲ A 2024 application is needed; no emailing or faxing; mailing is preferred as long as it is postmarked before the 29th.

Download an application @ www.rauschcreekracing.com.

Tip of the Day!



5 Myths That Are Costing You Money on Gas

1. Restarting Your Engine Uses More Gas than Idling...if you are waiting for long than 30 seconds in your car, turn off the engine. You use more fuel idling after 30 seconds than you use to restart your car.
2. Your Car Needs to Warm Up in Winter...Today's cars are designed to warm up while being driven, so after you give the car 30-60 seconds of idling time, you can be on your way—just take it easy for the first few minutes on the road. You'll save both time and gas!
3. Seat Warmers Waste Energy...Heated seats don't have to use as much energy as your car's heating vents to keep you warm.
4. Premium Gas Makes Your Car Run Better...Only 5% of cars actually run better. Check your owner's manual to see what is recommended.
5. "Topping Off" is Worthwhile...Have you ever "topped off" your car's gas tank to round out the price at the pump? You should know that since the pump is only pumping out vapors at that point, they're automatically sucked back into the gas station's tank. In other words, even though you now have exact change, you didn't get any extra gas!!

Local To Do's

Every Friday afternoon & evening, Crossroads Farmer's Market is open on Route 25 between Gratz & Berrysburg.

Sky-Vu Drive-In Theatre in Gratz is CLOSED for the season

*****Fire & Ice Winter Fest** Sunday, Feb. 4, 2 - 4 pm Sweet Arrow Lake County Park Clubhouse, Pine Grove Winter fun for everyone! Join us at Sweet Arrow Lake as we enjoy winter with Fire & Ice.

Fire up hotdogs over an open fire -- Enjoy a homemade ice-cream making demo -- Mathew Dodd will entertain young and old with songs and stories about bugs. Times to be announced. Advance registration is required to participate in the chili competition by calling Susan at 570-624-3018. Free Admission: small cost for some activities

**Motorama

THE NATIONS LARGEST ALL INDOOR MOTORSPORTS EVENT FEATURING 1 MILLION SQ FEET OF EXHIBIT SPACE... It all goes down February 17th & 18th, in Harrisburg, Pa at the Farm Show Complex.

2024 event schedule

February 17 Sweetheart Day

March 16 St Patty's Day Ride

April 20 Spring Cleanup

May 4 Sarge's Memorial Ride

May 25 Members Only Poker Run

June 15 Treasure Hunt

July 6 Member Appreciation Day/Swap Meet

July 20 Kids Scavenger Hunt

July 20 Christmas in July Ride

August 3 Bonfire Bash

August 31 Mud Ride

October 6 Dual Sport Ride

October 19 Trick or Treat Day

November 2 Fall Foliage Ride

November 16 Turkey Feast

SWEETHEART DAY @ THE OFFICE

Sweethearts or
just friends;
join us the
weekend

after Valentines day for some complimentary
hot cocoa and coffee.

After you grab that hot cocoa, plan with your
friends to take off on
a nice relaxing scenic ride

Bring your thermos to fill up with endless hot cocoa at the office.



February 17^h

